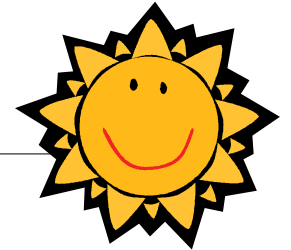


June

Grades K—6th

# June – End of School Jam!

## Aloha – EXTRA After-school Program



Homework Hour will consist of:  
 Running For Reading (10-20 min.)  
 Homework time (40-50 min.)

Site Director :  
 Frank Rosales  
 Hours of Operation 2-6 pm

Intervention time will consist of:  
 Measure ups (30 min)  
 Ch. Dev/enrichment (30 min)

THEMES	Mon	Tue	Wed	Thu	Fri
<i>Sizzling Safari</i>	3 Homework Time Character/Art: Animal Mask Outdoor Game: Flag Football Passing	4 Homework Time Character/Art: Build Your Parrot Outdoor Game: Flag Football	5 Homework Time Character/Art: Animal Costumes Outdoor Game: Flag Football	6 Homework Time Character/Art: Jungle Book Play Outdoor Game: Flag Football	7 Homework Time Character/Art: Jumanji Outdoor Game: Flag Football
<i>Under The Sea</i>	10 Homework Time Character/Art: Build a fish Outdoor Game: Volleyball overview	11 Homework Time Character/Art: Ocean food chain Outdoor Game: Freeze tag ga,	12 Homework Time Character/Art: Ocean model construction Outdoor Game: Volleyball Passing	13 Homework Time Character/Art: Oceanography Outdoor Game: Volleyball setting /spiking	14 Homework Time Character/Art: Finding Nemo Outdoor Game: Volleyball tourney
<i>End Of School Jam!!!</i>	17 Homework Time Character/Art: End of school jam prep and decorating Outdoor Game: Kickball	18 End of School Jam Party!			

